

BAOLAI

www.baolai.vn





Barocco

CONTENT

INTRODUCTION	5
FACTORY	11
PRODUCTS	15



BAO LAI WAS ESTABLISHED IN 2010, WITH ITS HEAD OFFICE AT NO. 166 PHAM VAN DONG STR., BAC TU LIEM DIST., HANOI, VIETNAM, A MARBLE CUTTING AND PROCESSING FACTORY AT YEN BINH DISTRICT, YEN BAI PROVINCE, VIETNAM, AND WHITE MARBLE QUARRIES IN LUC YEN DISTRICT, YEN BAI PROVINCE, VIETNAM.

Yen Bai white marble has been highly estimated by leading experts and users all over the world for its quality and unique nature. The nature, miraculous whiteness and crystal grains of Yen Bai white marble have been devoted to the interior-exterior works of families, hotels & resorts, shops & showrooms, offices, buildings, and factories...

Bao Lai is specialized in exploiting, cutting and processing Yen Bai white marble in serve for global tiling and paving demands.

To meet customer requirements, Bao Lai has been investing in production and trading with large-sizes, the most advanced equipment from Italy, ensuring high quality standard and reliability. With the motto to take customer needs as our motivation to optimize production and trading, Bao Lai is ready to supply products with multiple models and international standards, proving the national resource values.

VISION TO 2020

To become a Global Organization with world-top quality and dominate major market niches for the company's unique materials in almost countries around the world including Europe, Middle East, America, and Asia;

To always keep a friendly, efficient, and developing working environment where our personnel can work safely and get promotions along with their active efforts;

To cooperate with local and national communities for better and better social and economic conditions in contribution to the achievement of Millennium Development Goals for Vietnam;



INTRODUCTION



QUARRIES

BAO LAI IS EXPLOITING AND DEVELOPING QUARRIES IN LUC YEN DISTRICT, YEN BAI PROVINCE. THIS IS AN AREA WITH THE LARGEST RESERVE OF HIGH-QUALITY WHITE MARBLE IN VIETNAM.



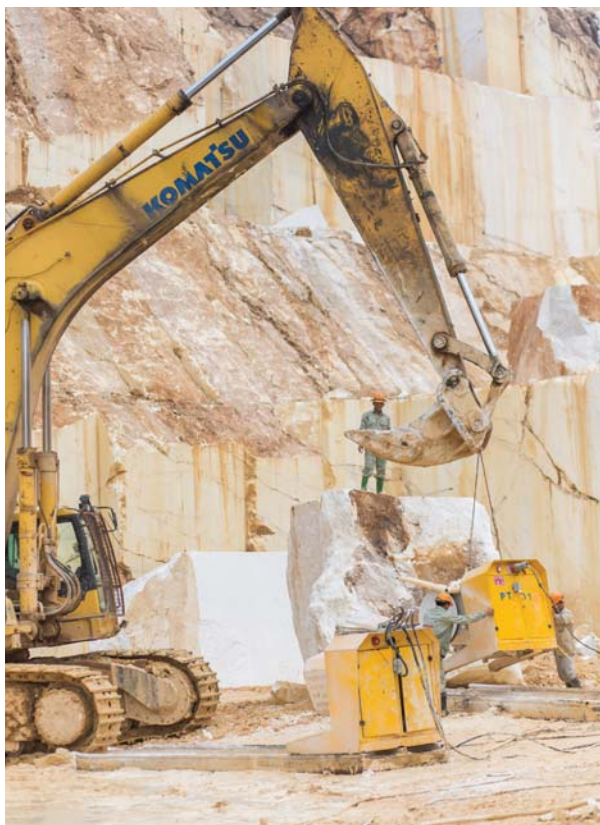


Currently, Bao Lai has 04 active quarries, in Luc Yen district, exploited since November 2011, named as Tuong Phu, An Phu, Phan Thanh, and Doc Thang. The quarries are approximately 300km from Hanoi (via express highway Noi Bai – Lao Cai and PH07) and 365km from Haiphong Port (via road PH32 and NH37).

The total area of the 04 quarries is 100ha with an estimated total commercial marble reserve of 74 million m³.

NATURAL MARBLE BLOCKS

Our quarries now can exploit high-quality blocks with materials branded as: Snow White, Queen White, Diamond White, Opal White, Aramis White, Barocco, Onyeike, Palissandro Antique and Palissandro Boheme.







YEN BINH FACTORY - THE LARGEST WHITE MARBLE FACTORY IN VIETNAM.

Yen Binh Factory is located in Ao Khoai Hamlet, Thinh Hung Commune, Yen Binh District, Yen Bai Province, Vietnam, nearly 150km from Hanoi City. This is a very favorable location which allows us to take input blocks from our quarries both by roadway and waterway within 02 hours.

The total area of Yen Binh Factory is about 60ha. The factory capacity for processing natural white marble slabs and tiles is 735,000 m²/year. Our slabs and tiles are processed in a complete cycle within the factory campus. All phases from cutting, polishing, resining, and processing are performed in a professional processes and state-of-the-art Breton gangsaws, Breton polishing lines, Breton resin lines, Breton processing lines, and other world-leading equipment and machines. Finished-products meet top-world standards in quality, in every ordered size, and are also packed and transported in international export standards.

Particularly, the factory is equipped with Breton water treatment system. This system ensures water discharged from all of our processing lines are collected, treated, filtered and returned to lines in high quality for required processing need. The water treatment is therefore completely closed without any sewage into outside environment, realizing our target to make the factory to be eco-friendly and safe to local people.



FACTORY



NATURAL MARBLE PROCESSING EQUIPMENT AND MACHINES

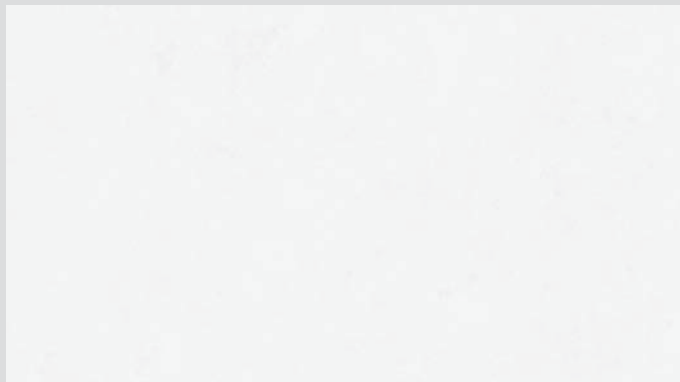
- BRETON MULTI-BLADE GANGSAWS BM 80S/800
- BRETON MULTI-BLADE GANGSAWS BM 40S/600
- BRETON AUTOMATIC POLISHING LINE 1M KFM 100/312
- BRETON AUTOMATIC POLISHING LINE 2M KG KFT 3600/017
- GASPARI SINGLE WIRE CUTTER
- GASPARI MULTI-BLADE GANGSAWS DGS2000/80
- GASPARI AUTOMATIC POLISHING LINE PMM2000/80
- BRETON RESIN AND FILLING SYSTEM
- BRETON FABSHOP SYSTEM
- GASPARI, BRETON, YINGJOW BRIDGE CUTTERS
- SHENGDA BLOCK CUTTERS



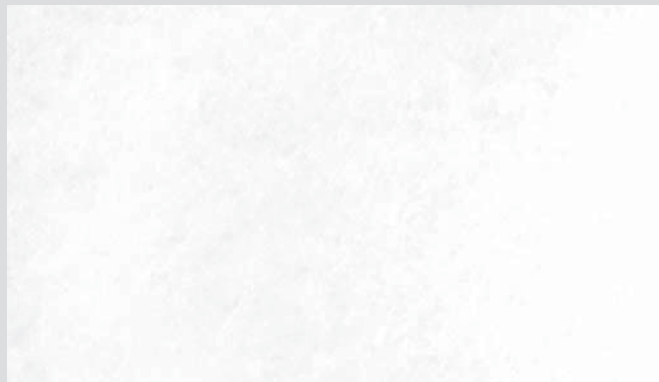


Opal White

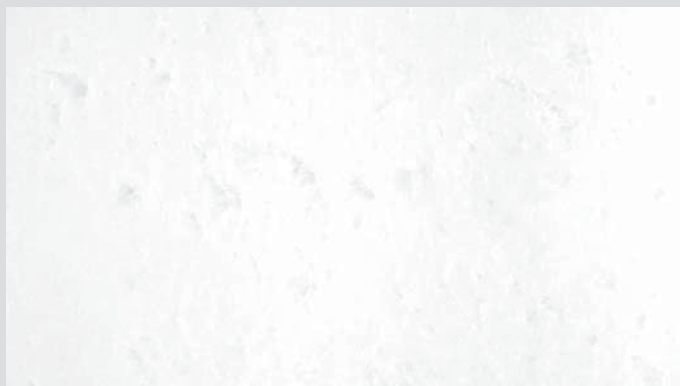
PRODUCTS



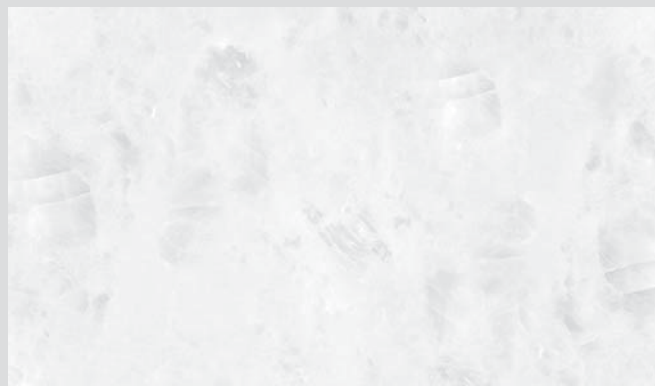
Snow White



Queen White



Diamond White



Opal White



Aramis White



Barocco



Onyeike



Palissandro Antique



Palissandro Antique



Palissandro Boheme



Palissandro Boheme



Polar White



Queen White



Queen White (backlight)



Diamond White



Diamond White (backlight)



Opal White



Opal White (backlight)



Aramis White



Aramis White (backlight)



Aramis White (backlight)



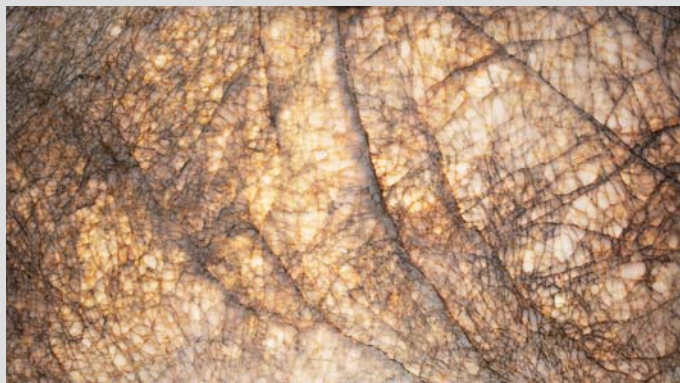
Barocco



Barocco



Barocco (backlight)



Barocco (backlight)



Onyeike



Onyeike (backlight)



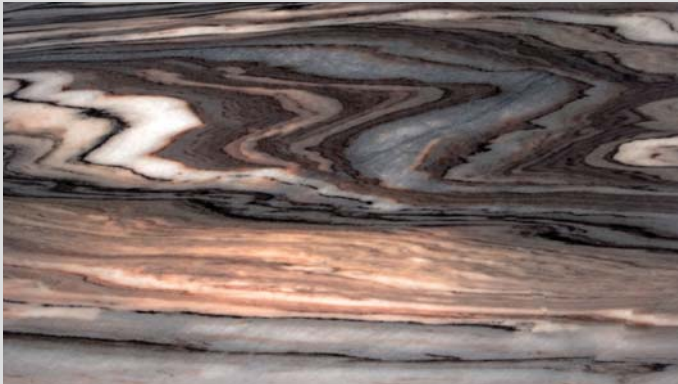
Palissandro Antique



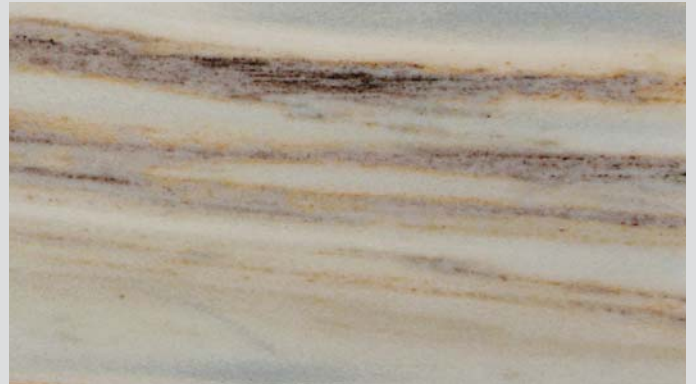
Palissandro Antique (backlight)



Palissandro Antique



Palissandro Antique (backlight)



Palissandro Boheme



Palissandro Boheme (backlight)



Palissandro Boheme



Palissandro Bluette



Palissandro Bluette



Palissandro Bluette (backlight)



Polar White



Polar White (backlight)



Palissandro Bluette



	Chemical Analysis (Unit % by mass)	Value (as per ASTM guidelines)
1	Loss on Ignition (at 1000o +/- 10o C)	43.7
2	Silica (as SiO ₂)	0.22
3	Alumina (as Al ₂ O ₃)	0.02
4	Iron Oxide (as Fe ₂ O ₃)	0.02
5	Lime (as CaO)	55.5
6	Magnesia (as MgO)	0.27
7	Titania (as TiO ₂)	Nil
8	Soda (as Na ₂ O)	Less than 0.01
9	Potash (as K ₂ O)	Less than 0.01
10	Calcium Carbonate (as CaCO ₃)	99.2
	Physical Analysis	Value
1	MOH Hardness (unit as per MOH scale)	4
2	Water Absorption (% by wt.)	< 0.1
3	Bulk specific gravity (kg/m ³)	2.71
4	Compressive Strength (kg/cm ²)	Dry – 559
		Saturated - 480

BAO LAI

HEAD QUARTER:

166 Pham Van Dong Rd.,
Xuan Dinh Ward,
Bac Tu Liem Dist.,
Ha Noi City, Viet Nam
Tel: (+84) 243248 4198

CONTACT US:

Website: www.bao-lai.vn/
Email: info@blgroup.vn

FACTORY:

Ao Khoai Hamlet,
Thinh Hung Commune,
Yen Binh District,
Yen Bai Province, Vietnam
Tel: (+84) 2166260 666

CONTACT US:

Website: www.bao-lai.vn/
Email: info@blgroup.vn



BA★LAI